

CASE STUDY

SLOPES & EMBANKMENTS



TRIO Housing Development,
Kampong Kianggeh - Brunei

OVERVIEW >>>>

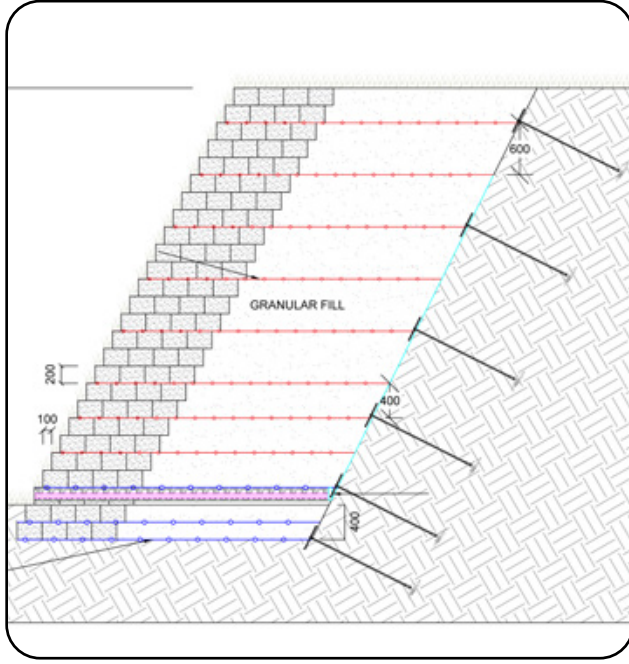
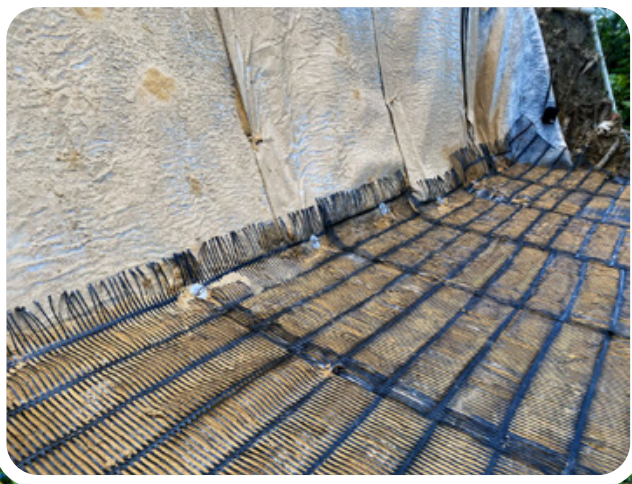
At the TRIO Private Housing project in Kampong Kianggeh, a significant 5m high slope failure occurred below an existing house due to previously used unsuitable construction materials and persistent wet soil conditions. A sustainable and effective solution to restore the slope was required by the end client, and with limited space and restricted access, traditional reinforced earth solutions were not a practically viable option.



SOLUTION >>>>

The comprehensive design involved installing Platipus Anchors into the existing soil, followed by building up the slope using selected backfill material reinforced with geogrids at each layer. Each installed geogrid layer was connected to the Platipus S4 ARGS anchor systems, providing overall stability to the slope. The surface was then turfed to provide additional surface stability and aesthetic appeal. This

multi-faceted approach successfully mitigated the slope failure, with the restored slope remaining stable and strong. The project showcased the adaptability and superior performance of Platipus Percussion Driven Earth Anchors (PDEA®) in complex and demanding environments.



CONTACT OUR TEAM

www.minovaglobal.com



PRO-000126/EN-APPAC