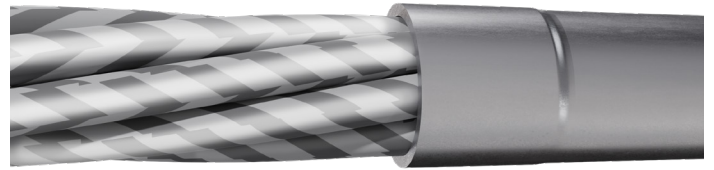


MINOVA CABLE BOLT

LONG TENDON GROUND SUPPORT



DESCRIPTION

The cable bolt range provides high-capacity ground support for underground and coal mining applications where extended stand times and strata movement are expected.

The APAC range includes continuous roll or cut-to-length 15.2 mm plain or bulbed cable bolts, available as single or twin strand systems with bulb spacing of 0.5 m or 1 m, and single or double tail configurations, including fish hook options.

High-capacity 21.8 mm Superstrand cables offer resin point-anchored performance, supplied as plain strand or with three top bulbs to enhance resin capsule mixing, with bulb diameters of 32 mm, 38 mm or 48 mm to suit 1 in or 1-3/8 in boreholes.

Strata cables feature reinforced bulbs every 500 mm along the groutable length for reliable load transfer in coal measures ground. All tensionable systems are rated up to 25 tonnes.

ADVANTAGES

- > Proven historical performance
- > Flexible formats with continuous roll or cut to length options
- > 15.2mm cable bolt supplied with fish hook to anchor cable into borehole prior to grouting
- > Bulb diameter changeable to suit requirements
- > Available accessories and hole plugging products
- > Resin Point Anchoring
- > Bulbs to assist resin capsule mixing
- > Wide range of plates and accessories

APPLICATION AND USES

Primary use is coal and hard rock mining, helping to reduce cribbing and improve ventilation. Accommodates strata movement.

TECHNICAL PROPERTIES

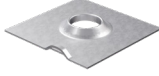
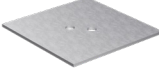
TYPICAL PROPERTIES	15.2 mm	21.8mm Superstrand	21.8mm Strata
Core Bolt Diameter Plain section (mm)	15.2	21.8	21.8
Typical Bulb Diameter (mm)	25 – 30	32 – 38	32 – 48
Cross Sectional Area Plain section(mm ²)	143	313	313
Number of Strands	7	19	19
Yield Strength (MPa)	202		
Yield Force – 0.2% (kN)	235	525	525
Tensile Strength (MPa)	1850	1800	1800
Tensile Force (kN)	270	590	590
Elongation (%) ¹	6.5	6 – 7	6 – 7
Mass per metre (kg/m)	1.125	2.482	2.482

¹ 600 mm length

SUPPORTING PRODUCTS

Plates

Minova supplies a comprehensive range of plates for use with the Cable Bolt. Plates most typically used are:

PLATE NAME	DIMENSIONS (mm)	IMAGE
DOME PLATE	150 x 150 x 7 150 x 150 x 10	
FLAT PLATE	200 x 200 x 12 300 x 300 x 10	

Accessories

Accessories include various barrel and wedges to suit either 15.2mm cable bolts or a 21.8 mm cable bolt. Barrel and Wedges consist of either two or three triangular shaped wedges placed inside a case hardened cylindrical barrel. Use to secure plates to the rock surface and in some instances to provide pretension to a resin point anchored cable bolt.

Other accessories include grout, breather tube and several hole plugging products.

Lokset Resin Capsules

The Lokset system consists of an easily handled capsules filled with a reinforced polyester resin in one compartment and a catalysed mastic filler in the other, separated by a physical barrier. The rotation of the bolt during installation ruptures the capsule, shreds the skin and mixes the two components causing a chemical reaction and transforming the resin mastic into a solid anchor.



PACKAGING & TRANSPORTATION

Bolts are usually packaged in bundles of 50 or 100. Coiled or flat bundle options available.

APPROVALS & CERTIFICATES

BOLT TYPE	MATERIAL STANDARD
15.2MM Cable	AS1311
21.8MM Superstrand Cable	AS/NZS 4672.1 : 2007 JISG 3536
21.8MM Strata Cable	AS/NZS 4672.1 : 2007 JISG 3536

MANUFACTURER

Minova Australia Inc

An ISO 9001:2015

Quality Management Certified Company

Certificate No. FM 689118



TECHNICAL SUPPORT

We provide technical advisory service by a team of specialists in the field. The service includes on site assistance and advice on evaluation trials and laboratory work.

CUSTOMER SERVICE

(1800 Minova) 1800 646 682

Email: sales_au@minovaglobal.com

Website: www.minovaglobal.com

DISCLAIMER

All information contained in this document is provided for informational purposes only and is subject to change without notice. Since Minova cannot anticipate or control the conditions under which this information and its products may be used, each user should review the information in the specific context of the intended application. To the maximum extent permitted by law, Minova specifically disclaims all warranties express or implied in law, including accuracy, non-infringement, and implied warranties of merchantability or fitness for a particular purpose. Minova specifically disclaims, and will not be responsible for, any liability or damages resulting from the use or reliance upon the information in this document.